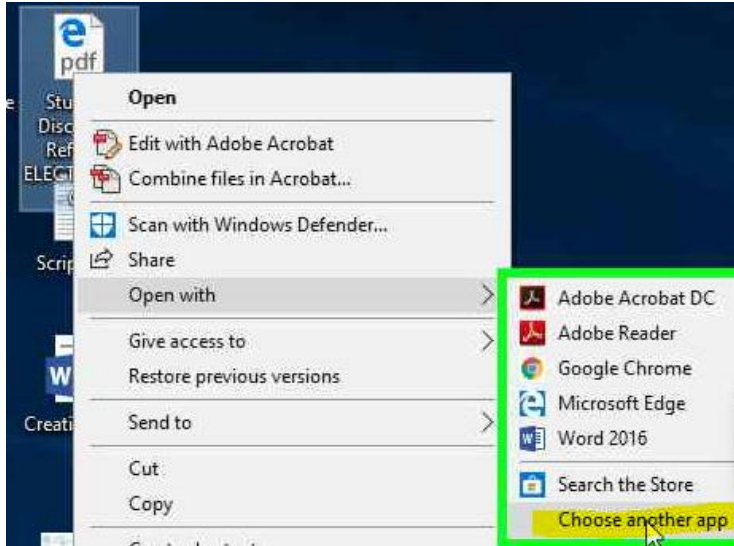


Setting Adobe Acrobat as your default PDF viewer instead of Edge

--After installing Adobe Acrobat, you may need to follow these instructions to set it as the default PDF reader instead of Microsoft Edge--

An easy way to do this is to save a PDF file directly to your Desktop. Then right click on the PDF and select Open with...Choose another app



Select Adobe Acrobat DC from the list and then check the box for “Always use this app to open .pdf files”. Then click Ok.

This should set Adobe Acrobat as your default PDF viewer so that PDFs will no longer open in Edge.

